



GeorgiaTrend



TOP 2019 HOSPITALS

Patient Centered

Data analysis uncovers state hospital rankings

Over the past several years healthcare reforms, particularly around unsustainable spending, the uninsured population and quality outcomes, have been widely discussed and debated. While this talk is ongoing, hospitals continue to operate in a complex regulatory environment with uncertain policy outcomes, all while making investments to enhance efficiency and deliver quality patient care.

For this list, which includes hospitals that provide a range of services, *Georgia Trend* evaluated each hospital in the state that participates in the Centers for Medicare and Medicaid Services (CMS) Hospital Value Based Purchasing program. The CMS program does not include VA medical centers, children's hospitals, critical access hospitals and long-term care facilities.

A total performance score based on information including clinical process, patient experience, outcome and efficiency was used to rank hospitals of similar size and mission. *Georgia*

Trend groups hospitals into Teaching Hospitals, whose primary mission is teaching regardless of size and are certified by the Association of American Medical Colleges Council of Teaching Hospitals and Health Systems; Large Hospitals (250+ patient beds); Medium Hospitals (100 to 249 beds); and Small Hospitals (less than 100 beds). The American Hospital Directory provided the hospital bed size.

The rankings are based on CMS data downloaded Aug. 3, 2019. Analysis of the data was completed for *Georgia Trend* by independent consultant Mark A. Thompson, professor and associate dean of the Hull College of Business at Augusta University.

While these hospital rankings on performance are useful and provide valuable information, there are many factors that consumers should consider when deciding where to go for their healthcare needs. Always consult your healthcare provider about your and your family's healthcare needs.

— Mark A. Thompson



TOP TEACHING HOSPITALS

Hospitals whose primary mission includes teaching and are certified by the Council of Teaching Hospitals (COH), regardless of size*

| | | |
|----|--|-----------------|
| 1. | EMORY UNIVERSITY HOSPITAL | ATLANTA |
| 2. | EMORY UNIVERSITY HOSPITAL MIDTOWN | ATLANTA |
| 3. | AUGUSTA UNIVERSITY MEDICAL CENTER | AUGUSTA |
| 4. | GRADY MEMORIAL HOSPITAL | ATLANTA |
| 5. | WELLSTAR ATLANTA MEDICAL CENTER | ATLANTA |
| 6. | THE MEDICAL CENTER, NAVICENT HEALTH | MACON |
| 7. | MEMORIAL HEALTH UNIVERSITY MEDICAL CENTER | SAVANNAH |

*Does not include VA medical centers or children's hospitals

A Growing Healthcare Community in Roswell

Located in the heart of Atlanta's northern suburbs, Roswell has been home to an innovative community of healthcare and medical businesses for decades.

From healthcare IT companies that are just getting started, to established global leaders in medical device technology, to a comprehensive regional medical center, Roswell's healthcare industry serves as a catalyst for both a stronger economy and a stronger community.

ROSWELL [inc]

To learn why Roswell is the perfect place to grow your healthcare business and your future, visit roswellinc.org.



2.4M+ Sq. Ft.
Total Healthcare
and Medical Space



8,000+
Local Workforce



**< 2,000 Sq. Ft.
Leases**
Perfect for
Healthcare Startups



Home to
**WellStar North
Fulton Hospital**

OUR STORY UNFOLDS THROUGH DISCOVERY, INNOVATION AND HEALING, THEN LIVES ON IN AMAZING WAYS.

The story of **Augusta University Health** is alive in the countless children and adults whom we've helped. As the region's only academic health center, we're home to many of America's Top Doctors who translate breakthroughs into life-changing treatment options and make them available to our patients first. To us, our story lives on by advancing the power of you.

To find a primary care physician or specialist with the academic advantage, visit augustahealth.org.

ADVANCING THE POWER OF YOU



WE ARE AUGUSTA UNIVERSITY HEALTH

- Children's Hospital of Georgia
- Georgia Cancer Center
- Augusta University Medical Center
- Medical College of Georgia
- Dental College of Georgia
- Medical Associates at West Wheeler
- Columbia County Health Campus — *Coming Soon*





TOP LARGE HOSPITALS

Hospitals with 250 or more patient beds

| | | |
|-----|--|----------------------|
| 1. | PIEDMONT ATLANTA HOSPITAL | ATLANTA |
| 2. | EMORY SAINT JOSEPH'S HOSPITAL | ATLANTA |
| 3. | WELLSTAR PAULDING HOSPITAL | HIRAM |
| 4. | NORTHEAST GEORGIA MEDICAL CENTER | GAINESVILLE |
| 5. | NORTHSIDE HOSPITAL | ATLANTA |
| 6. | PIEDMONT ATHENS REGIONAL MEDICAL CENTER | ATHENS |
| 7. | WELLSTAR KENNESTONE HOSPITAL | MARIETTA |
| 8. | HAMILTON MEDICAL CENTER | DALTON |
| 9. | SOUTH GEORGIA MEDICAL CENTER | VALDOSTA |
| 10. | NORTHSIDE HOSPITAL FORSYTH | CUMMING |
| 11. | SOUTHERN REGIONAL MEDICAL CENTER | RIVERDALE |
| 12. | NORTHSIDE HOSPITAL GWINNETT | LAWRENCEVILLE |
| 13. | WELLSTAR WEST GEORGIA MEDICAL CENTER | LAGRANGE |
| 14. | COLISEUM MEDICAL CENTERS | MACON |
| 15. | EASTSIDE MEDICAL CENTER | SNELLVILLE |
| 16. | FLOYD MEDICAL CENTER | ROME |
| 17. | DOCTORS HOSPITAL | AUGUSTA |
| 18. | PHOEBE PUTNEY MEMORIAL HOSPITAL | ALBANY |
| 19. | ST. FRANCIS HOSPITAL | COLUMBUS |
| 20. | UNIVERSITY HOSPITAL | AUGUSTA |
| 20. | PIEDMONT COLUMBUS REGIONAL MIDTOWN | COLUMBUS |



TOP MEDIUM-SIZED HOSPITALS

Hospitals with 100-249 beds

| | | |
|----|--|----------------------|
| 1. | WASHINGTON COUNTY REGIONAL MEDICAL CENTER | SANDERSVILLE |
| 2. | CARTERSVILLE MEDICAL CENTER | CARTERSVILLE |
| 3. | DONALSONVILLE HOSPITAL | DONALSONVILLE |
| 4. | NAVICENT HEALTH BALDWIN | MILLEDGEVILLE |
| 5. | WELLSTAR DOUGLAS HOSPITAL | DOUGLASVILLE |
| 6. | NORTHSIDE HOSPITAL CHEROKEE | CANTON |

24 CANCER PROGRAMS IN THE NATION AWARDED. ONLY ONE IN GEORGIA.

Northeast Georgia Medical Center's (NGMC) Cancer Services is the only program in Georgia to receive the 2018 Outstanding Achievement Award by the American College of Surgeons Commission on Cancer. As one of only 24 cancer programs in the nation to receive this award, NGMC offers cancer patients access to expert doctors, leading clinical trials and advanced treatments – right here at home.



Northeast Georgia Medical Center

Learn more at nghs.com/cancer | 770-219-8815

Top **Medium-sized** Hospitals continued

| | | |
|-----|---|----------------------|
| 7. | EMANUEL MEDICAL CENTER | SWAINSBORO |
| 8. | FAIRVIEW PARK HOSPITAL | DUBLIN |
| 9. | EMORY JOHNS CREEK HOSPITAL | JOHNS CREEK |
| 10. | UNION GENERAL HOSPITAL | BLAIRSVILLE |
| 11. | TANNER MEDICAL CENTER VILLA RICA | VILLA RICA |
| 12. | PIEDMONT NEWNAN HOSPITAL | NEWNAN |
| 13. | PIEDMONT FAYETTE HOSPITAL | FAYETTEVILLE |
| 14. | TANNER MEDICAL CENTER - CARROLLTON | CARROLLTON |
| 15. | WELLSTAR NORTH FULTON HOSPITAL | ROSWELL |
| 16. | TIFT REGIONAL MEDICAL CENTER | TIFTON |
| 17. | REDMOND REGIONAL MEDICAL CENTER | ROME |
| 18. | CANDLER HOSPITAL | SAVANNAH |
| 19. | NORTHRIDGE MEDICAL CENTER | COMMERCE |
| 20. | MEMORIAL SATILLA HEALTH | WAYCROSS |
| 21. | EAST GEORGIA REGIONAL MEDICAL CENTER | STATESBORO |
| 22. | HOUSTON MEDICAL CENTER | WARNER ROBINS |
| 22. | HABERSHAM MEDICAL CENTER | DEMOREST |
| 24. | ST. MARY'S HOSPITAL | ATHENS |
| 25. | CRISP REGIONAL HOSPITAL | CORDELE |



TOP SMALL HOSPITALS

Hospitals with fewer than 100 beds

| | | |
|-----|--|-----------------|
| 1. | EVANS MEMORIAL HOSPITAL | CLAXTON |
| 2. | ADVENTHEALTH GORDON | CALHOUN |
| 3. | PIEDMONT MOUNTAINSIDE HOSPITAL | JASPER |
| 4. | NORTHEAST GEORGIA MEDICAL CENTER BARROW | WINDER |
| 5. | PERRY HOSPITAL | PERRY |
| 6. | PIEDMONT COLUMBUS REGIONAL NORTHSIDE | COLUMBUS |
| 7. | STEPHENS COUNTY HOSPITAL | TOCCOA |
| 8. | PHOEBE SUMTER MEDICAL CENTER | AMERICUS |
| 9. | WAYNE MEMORIAL HOSPITAL | JESUP |
| 10. | COLQUITT REGIONAL MEDICAL CENTER | MOULTRIE |


Making a positive difference in every life we touch.

Today, we celebrate eight of our hospitals being named Top Georgia Hospitals, and we honor Piedmont Atlanta's No. 1 ranking among large hospitals. We are honored to be recognized in our efforts to make a positive difference in every life we touch.

Learn more about our award-winning care at [piedmont.org](https://www.piedmont.org)



Top Small Hospitals continued

| | | |
|-----|---|---|
| 11. | FANNIN REGIONAL HOSPITAL | BLUE RIDGE |
| 12. | SOUTHEAST GEORGIA HEALTH SYSTEM - CAMDEN CAMPUS | ST. MARYS |
| 13. | ST. MARY'S SACRED HEART HOSPITAL | LAVONIA |
| 14. | COLISEUM NORTHSIDE HOSPITAL | MACON |
| 15. | DODGE COUNTY HOSPITAL | EASTMAN |
| 16. | MEADOWS REGIONAL MEDICAL CENTER | VIDALIA |
| 17. | COFFEE REGIONAL MEDICAL CENTER | DOUGLAS |
| 18. | PIEDMONT NEWTON HOSPITAL | COVINGTON |
| 19. | UPSON REGIONAL MEDICAL CENTER | THOMASTON |
| 20. | GRADY GENERAL HOSPITAL | CAIRO  |



Congratulations to the 2019 Top Hospitals

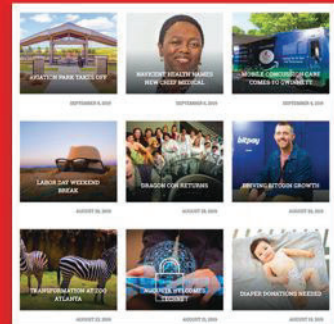


*Advocating, Communicating and Educating
on Behalf of Georgia's Hospitals*
www.gha.org

Check out our Georgiatrend BLOG

Latest Trends

Learn more about what's
happening around the state.



georgiatrendblog.com